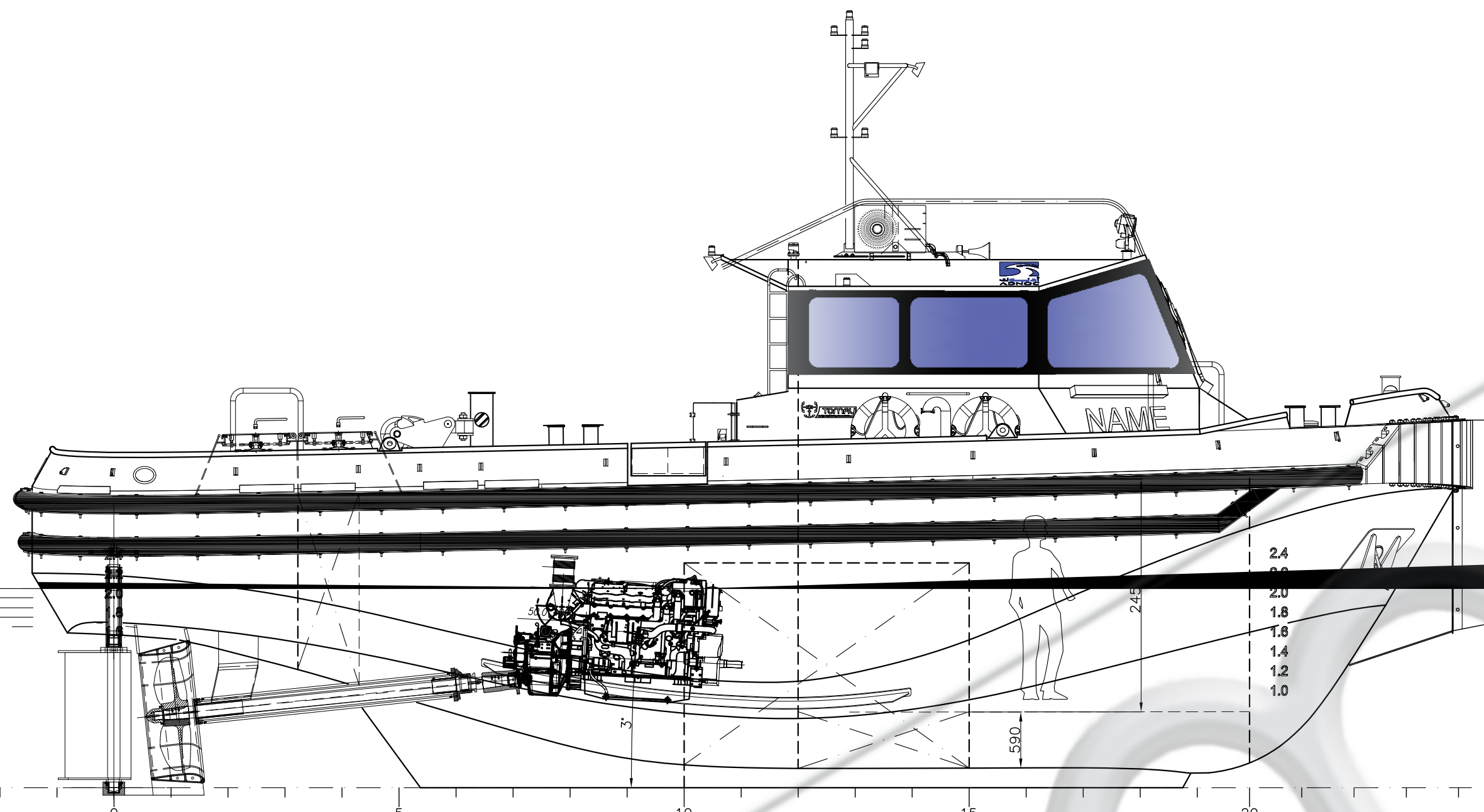
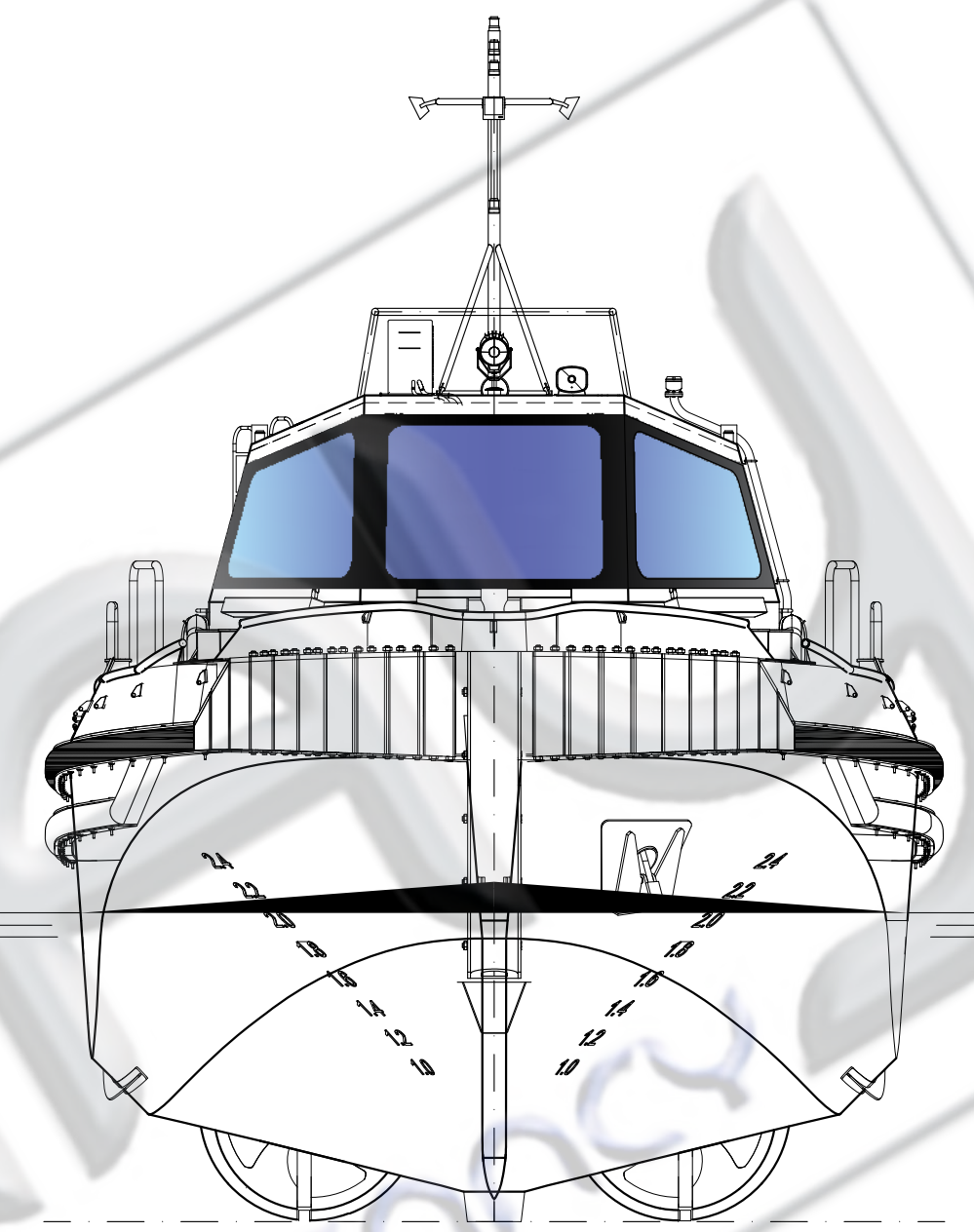


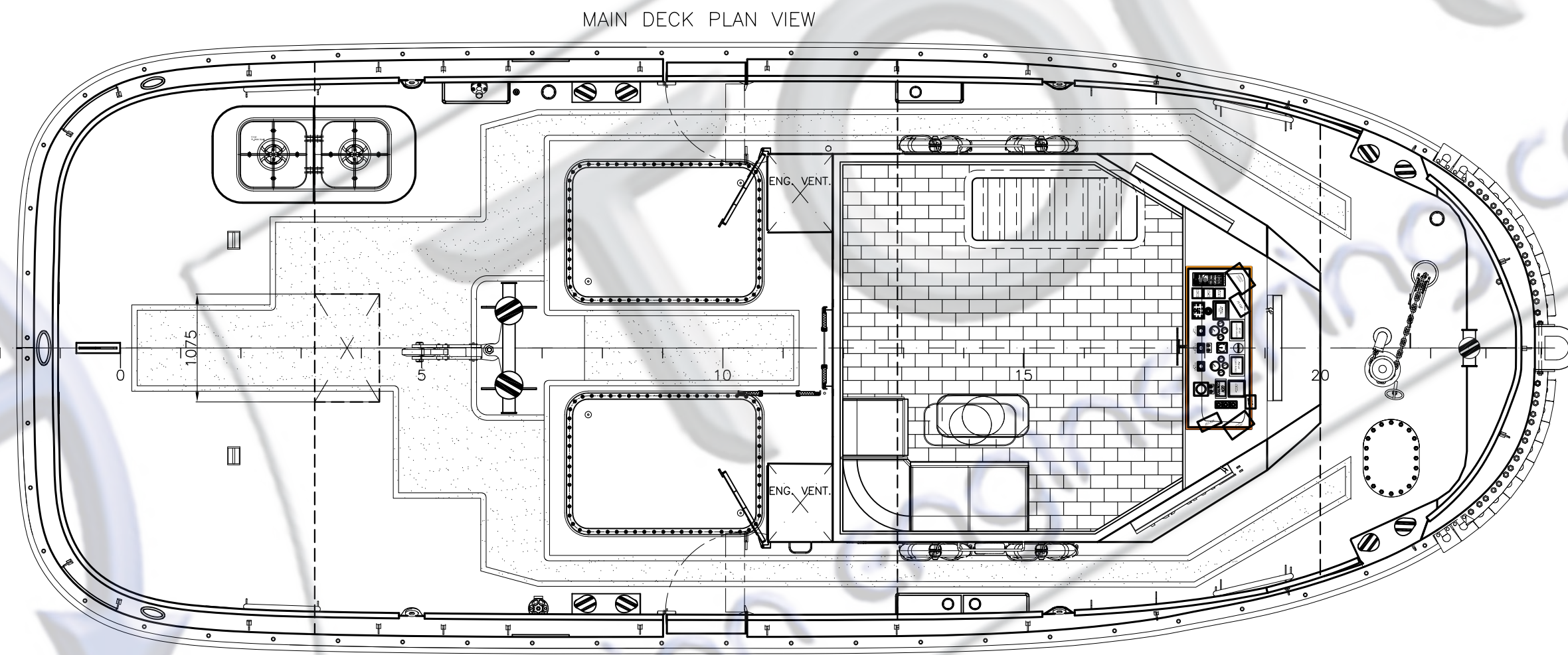
AFT VIEW



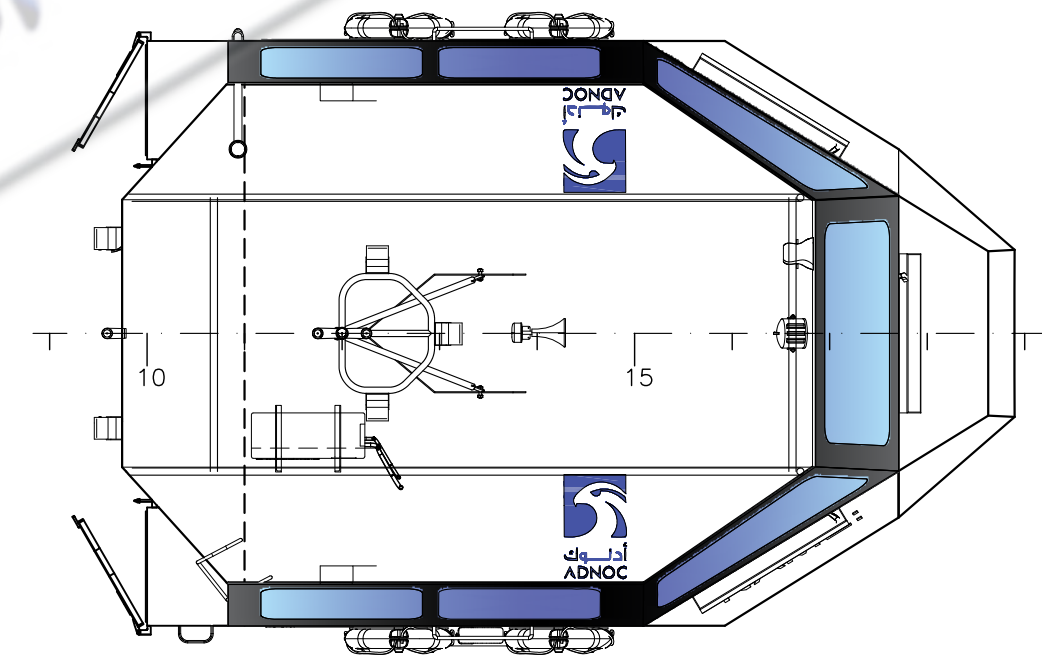
PROFILE VIEW



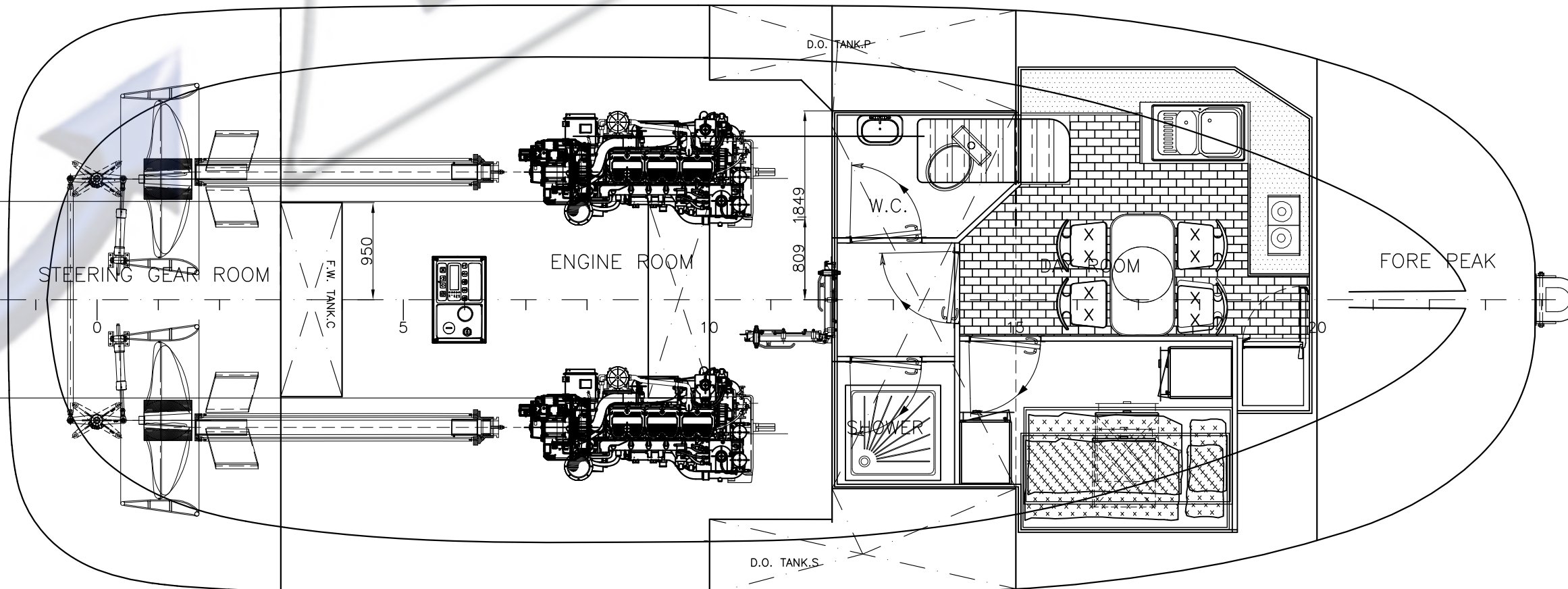
FRONT VIEW




MAIN DECK PLAN VIEW



BOTTOM VIEW



02				
01				
No	Date	Rev. By	Revision	Note
MAIN DIMENSIONS				
<i>APPROVAL STAMP</i>				
Length O.A. (inc. fenders)	: 15.580m			
Length (Hull)	: 14.950m			
Length W.L.	: 15.290m			
Length P.P.	: 13.525m			
Breadth (inc. fenders)	: 6.030m			
Breadth (Hull)	: 5.750m			
Depth at midship	: 3.100m			
Draught (Approx.)	: 2.300m			
Engine Power	: 2x447kW			
Bollard Pull (Approx.)	: 15 t			
NOTATIONS				
RINA C-M Mooring Boat, Coastal Navigation				
				MOORING BOAT 15 ton
TBN-TUG-14				
GENERAL ARRANGEMENT				
Design	Teoman TOMBAK	Shipyard	EREGLI SHIPYARD	
Drawn	A. Burak KABASAKAL	Owner	MED MARINE	
Control	Teoman TOMBAK	Class	RINA-*****	
Approved		Hull No	ER-000	
		Project No	TUG-14	
		Drawing No	R-01	
		Scale	1/50	
		Issue Date	23.09.2019	
<small>THIS DESIGN AND ITS COPYRIGHTS ARE PROPERTIES OF TEOMAN TOMBAK/TOMAY THE DRAWINGS & SPECIFICATIONS CONTAINED HEREIN SHALL NOT BE REPRODUCED IN WHOLE OR IN PART, OR NOT TO BE GIVEN TO THIRD PARTIES WITHOUT WRITTEN PERMISSION FROM TEOMAN TOMBAK / TOMAY</small>				
<small>BU DIZAYN VE BUNUNLA ILGULI RESIMLERIN TELIF HAKLARI TEOMAN TOMBAK A AITIR. TEOMAN TOMBAK'IN YAZLI MUSADESİ OLMDAN BU DOKUMAN VEYA BUNUN BİR KISMI UCUNCU SAHİSLARA VERİLEMEZ, TEKSİR VEYA KOPYA EDİLEMEZ VE HER NE MAKSATLA OLURSA OLSUN MAKSADİ DİSİNDA KULLANILMAZ</small>				